

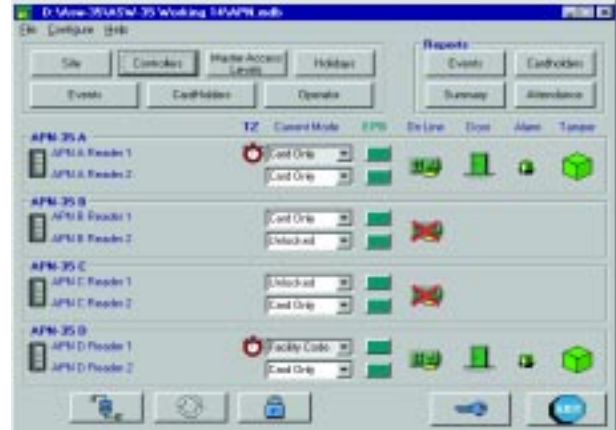
ASW-35

Windows Based Access Control Software

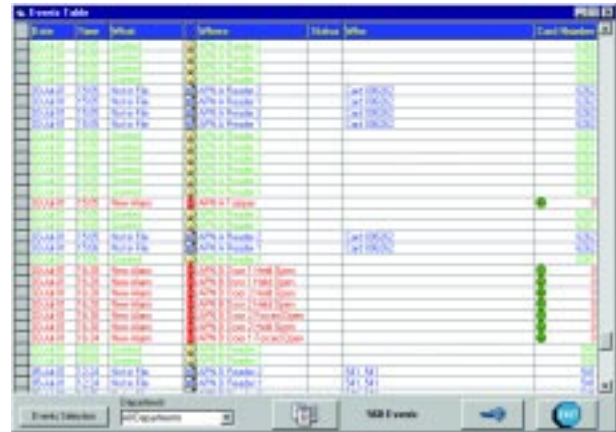
The **ASW-35** is Apollo's new simple and extremely user friendly access control software. It is used in conjunction with the new **APN-35**, 2 door controller. Up to 4 **APN-35** controllers can be daisy chained together to form an eight door system or 4 door system with in/ out readers on a single port. The **ASW-35** provides a graphically represented real time status display. On line events display can be selectively checked to display only the required events. A quick report is available for quickly generating a report of the first used and last used of each cardholder.

The **ASW-35** also supports a simple Time and Attendance report for generating work time.

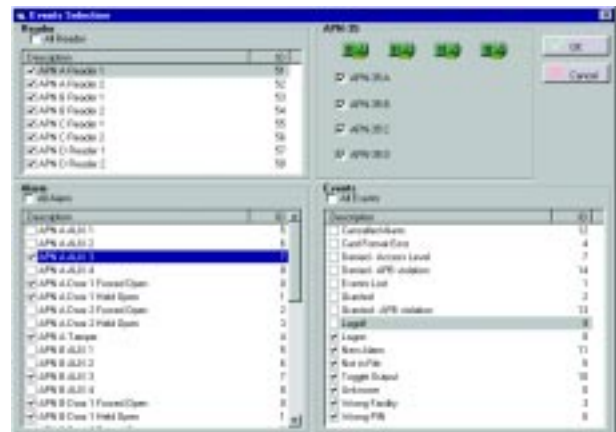
Main screen



Events table



Report filter



ASW-35 Software features:

- Support up to 4 controllers (APN-35) per site.
- 8 access levels per controller.
- Master access levels configuration.
- Real time reader mode display and control.
- Real time controller status display
- Real time on-line events display.
- Selective events report generator.
- Time and Attendance Cardholder report.
- Access summary report.
- TZ input masking.
- Custom report headers.
- Stores additional notes about cardholder.
- Archiving utility.
- Customized card formatting.
- Virtually, unlimited access levels configuration.
- Creates clear, concise and filtered reports for reviewing.
- Command directly from the main menu.
- WYSIWYG report generating.
- Selective event reporting.
- Supports MAG and Wiegand signaling.
- Filtering from the events table.



3610 Birch Street
 Newport Beach, California 92660-2619 USA
 Phone 949-852-8178 • FAX 949-852-8172
 Web site: www.apollo-security.com
 E-mail: apollo@apollo-security.com

HIGH IMPACT REPORTS

Event Report 40 of 40 70% Total:815 100% 815 of 815

Page 40

Events

Date	Time	What	Where	AttendanceType	Who	CardNumber
12-Jul-2001	11:13:01 PM	Cancelled Alarm	APN D Door 2 Held Open			0
12-Jul-2001	11:14:00 PM	New Alarm	APN D Door 2 Held Open			0
12-Jul-2001	11:21:00 PM	Card Format Error	APN A Reader 1			0
13-Jul-2001	12:27:00 AM	Granted	APN A Reader 2		Saiche, Linda	541
13-Jul-2001	12:27:01 AM	Not In File	APN A Reader 1			Card 006264
13-Jul-2001	12:28:00 AM	Not In File	APN A Reader 1			6,264
13-Jul-2001	12:28:00 AM	Granted	APN A Reader 2		Monard, Stephan	Card 006262
13-Jul-2001	12:28:02 AM	Granted	APN A Reader 2			6,262
13-Jul-2001	12:28:06 AM	Granted	APN A Reader 2		Saiche, Linda	540
13-Jul-2001	12:28:09 AM	Granted	APN A Reader 1		Capitaine, David	541
13-Jul-2001	12:28:10 AM	Granted	APN A Reader 1			Card 24
					Low, Richard	77

1 of 1 90% Total:12 100% 12 of 866

Attendance Report

Group By Department

	In	Out	Worked Hours	Total Worked Hours
Engineers				
Capitaine, David				
	7/13/01 7:58:01 AM	7/13/01 5:31:12 PM	9:33	9:33
Monard, Stephan				
	7/13/01 8:31:11 AM	7/13/01 12:02:06 PM	3:31	3:31
	7/13/01 12:37:04 PM	7/13/01 6:37:09 PM	6:00	9:31
Marketing				
Low, Richard				
	7/13/01 8:15:00 AM	7/13/01 8:20:01 AM	0:05	0:05
	7/13/01 8:50:02 AM	7/13/01 5:13:00 PM	8:23	8:28
Zaiche, Linda				
	7/13/01 7:55:10 AM	7/13/01 5:02:05 PM	9:07	9:07

1 of 1 70% Total:220 100% 220 of 815

7/13/01 Page 1

Access Summary

Date	CardNumber	Department	Name	First Used	Last Used	First Location	Last Location
13 Jul 01	22	Marketing	Low, Richard	0:28:10	0:28:10	APN A Reader 1	APN A Reader 1
	24	Engineers	Capitaine, David	0:28:09	0:28:09	APN A Reader 1	APN A Reader 1
	540	Engineers	Monard, Stephan	0:28:02	0:28:02	APN A Reader 2	APN A Reader 2
	541	Marketing	Saiche, Linda	0:27:00	0:28:06	APN A Reader 2	APN A Reader 2
	6262		Card 006262	0:28:00	0:28:00	APN A Reader 1	APN A Reader 1
	6264		Card 006264	0:27:01	0:27:01	APN A Reader 1	APN A Reader 1