

APN-35

1 or 2 Door Access Controller

The APN-35 is the latest concept in low cost 2 door access control systems. The APN-35 is also used for a single door operation with in / out readers and anti-passback. Used in conjunction with the ASW-35 software, up to 4 APN-35 can be daisy chained together to form an 8 door system. The APN-35 supports standard proximity readers and other readers with Wiegand or ABA track 2 (MAG) output. The APN-35 stores all door configuration and maintains cardholders database, TZ, access levels and holidays integrity even when not connected to a PC. On board battery backed real time clock stamps events as they occur. The APN-35 stores up to 3750 events in its buffer for later recall for processing of reports by the PC.



APN-35 features:

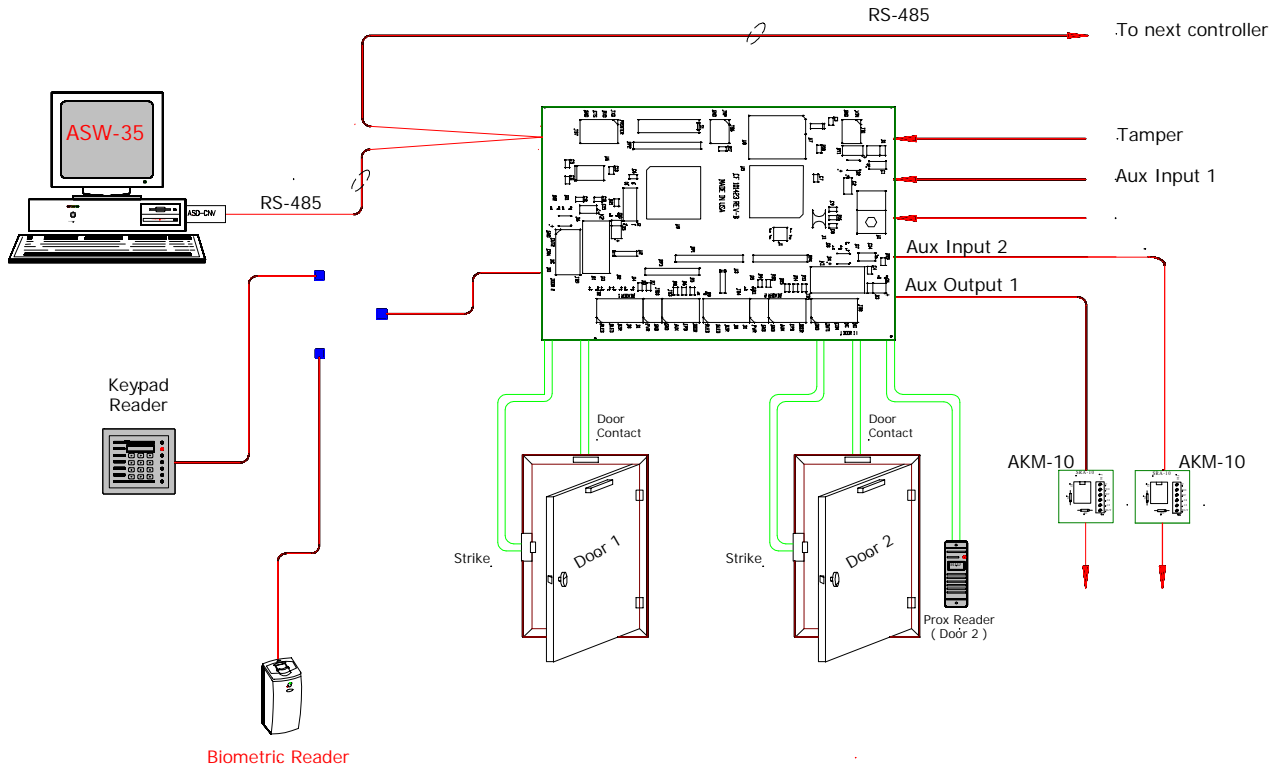
- State-of-the-art surface mount technology.
- Flash memory.
- 1 or 2 door operation.
- Non-volatile memory for database / events storage.
- 2000 sequential / random cards and / or PINs.
- 10 time zones, 8 access levels, 40 holidays.
- 2 intervals per time zone.
- Time zone reader mode control.
- Time zone alarm masking.
- RS-485 interface (RS-232 optional).
- Up to 3750 local events storage.
- Real time battery backed clock.
- Tamper, door monitoring.
- 2 aux inputs.
- 2 aux outputs (with external AKM-10 relays)
- Hard / soft anti-passback.
- Monitors forced / held open events.
- Card, card + PIN, card or PIN, facility, locked + unlocked mode.
- Secondary password for output control.

ASW-35 software main screen



3610 Birch Street
Newport Beach, California 92660-2619 USA
Phone 949-852-8178 • FAX 949-852-8172
Web site: www.apollo-security.com
E-mail: apollo@apollo-security.com

APN-35 Windows based, 1 or 2 door Proximity Controller



2 Door Configuration Shown

ORDERING INFORMATION

Standart RS-485 configuration

Model Number	Part Number	Description
APN-35	482-035	2 Door Controller with RS-485 Interface (ASD-485) included
ASD-CN1	482-100	RS-232 to RS-485 Converter
ASD-485	482-485	Plug in RS-485 serial driver (used on APN-35 and AP-600/700)
AUS-12	460-070	115/230 VAC input/12Vdc 2.0A UPS with 5 Ah battery, power indicator.

Optional RS-232 configuration

Model Number	Part Number	Description
APN-35-232	482-235	2 Door Controller with RS-232 Interface (ASD-232) included
ASD-232	482-232	Plug in RS-232 serial driver (used on APN-35-232 and AP -600/700)
AUS-12	460-070	115/230 VAC input/12Vdc 2.0A UPS with 5 Ah battery, power indicator.

3610 Birch Street
Newport Beach, California 92660-2619 USA
Phone 949-852-8178 • FAX 949-852-8172
Web site: www.apollo-security.com
E-mail: apollo@apollo-security.com